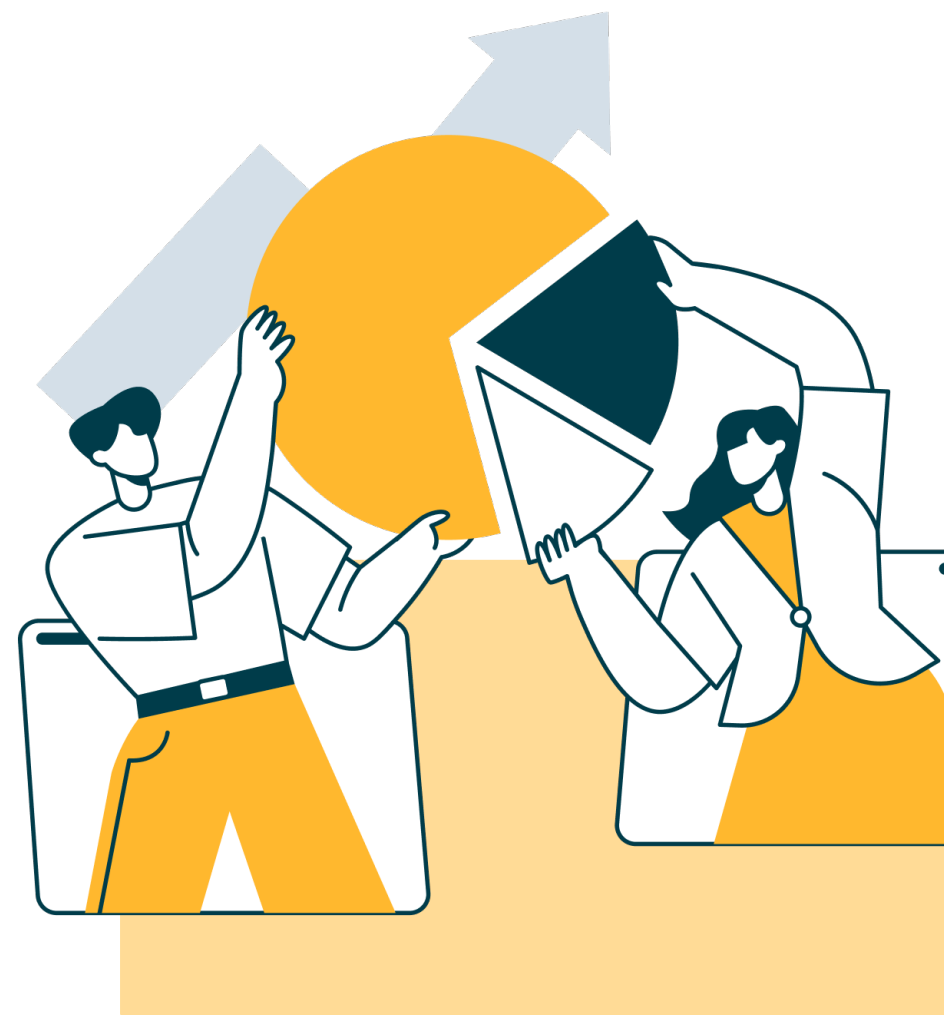


Data Stewardship at University of Latvia: Experience and Reflection

21/05/2026

Network of Latvian Data Stewards, 2026.

CC BY 4.0



Project «Support for implementing Open Science, developing solutions for shared use of research data, and participation in the EOSC» (Project No 2.1.3.1.i.0/2/23/I/CFLA/002)

UL data stewards

datu.kuratori@lu.lv



Artūrs Svarinskis

data steward



Danija Maļceva

data steward



Emīls Siliņš


data steward




Iveta Andersone

coordinator of
data stewards

Support for Researchers

- **Seminars and training** (*15 seminars, 479 participants*): regular seminars for UL researchers on research data management, open science, FAIR principles and sensitive data.
 - **Individual consultations** (*325 consultations*): consultations for researchers on data management plan development, data publishing in DataverseLV, data storage/preservation and other RDM-related issues.
 - **Monthly newsletter** (*12 issues*): a regular digest of news in research data management, data steward activities and free professional development opportunities. Distributed to researchers and published in the UL staff newsletter "Uzzini pirmais!".
 - **E-course on Open Science**: development of self-education materials
- 

Institutional Work

- **Policies and guidelines** (3 documents): development of the Open Science Policy, Regulations on Research Data Management at the UL, and Research Data Management Guidelines for UL Researchers – the institutional foundation defining how UL researchers work with research data.
 - **UL website sections** (5 sections): development of content for the research section of the UL website – Open Science, Research Data Management, Research Ethics, IT Tools Catalogue, and External Data Resources Catalogue.
 - **Datasets in DataverseLV** (24 datasets): establishment of the UL collection in the national research data repository and publication of the first datasets – a concrete step towards open data.
 - **Datasets linking in Pure** (116 datasets): connecting research datasets to UL's research information system Pure – increasing data visibility and accessibility at the institutional level.
- 


Main activities

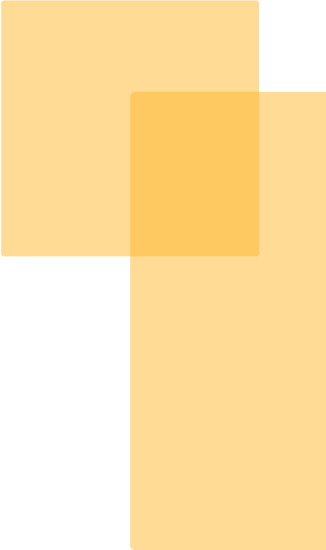


Monitoring	We started by conducting interviews with researchers, IT, legal and administrative staff to map the state of RDM at the university. This shaped our entire approach.
Individual consultations	Researchers came when they had a specific, real need. This was the most effective form of engagement.
Educating	This gave institutional visibility. Even when attendance varied, UL researchers got informed that this kind of support is available.
Monthly newsletters	A regular, low-effort way to maintain contact with the audience between events.

Challenges

Continues Learning	Data stewardship was a new type of activity for us. It required constant self-education while continuing to provide support for the researchers.
Implementing new institution-level processes takes time	Developing, approving and implementing new guidelines at university is a lengthy process – this is something a project-based team has limited influence over.
Change of attitude does not take place overnight	Policies can be developed, seminars held, consultations given – but changing mindset and habits takes much longer.
Setting boundaries	The Data Steward Team is not an IT helpdesk, nor is it a single point of contact for all matters concerning work with patents and sensitive data.

What Remains at UL

- **Guidelines and policies:** UL research data management regulations and guidelines that the university continues to use.
 - **Online resources:** an e-course on Open Science on the Moodle platform and dedicated website sections remain available to UL researchers beyond the project.
 - **Researcher awareness:** UL researchers are now more aware of RDM requirements and available support.
 - **Research data made visible:** UL research datasets are now publicly accessible in DataverseLV and linked in Pure, serving as a foundation for future open data practices.
 - **The work continues:** data stewardship at UL continues as part of the Research Department, with a dedicated team in place.
- 



True data stewardship relies on integrating it into the university's daily life, rather than simply measuring the volume of activities.



Thank you!

Presentation created within the project «Support for implementing Open Science, developing solutions for shared use of research data, and participation in the EOSC» (Project No 2.1.3.1.i.0/2/23/I/CFLA/002)



Funded by
the European Union
NextGenerationEU



Latvia University
of Life Sciences
and Technologies



RIGA TECHNICAL
UNIVERSITY



UNIVERSITY OF
LATVIA

RSU



VPC